



# COMMONWEALTH OF VIRGINIA Organization of State Government

This publication illustrates the overall organization of state government as of January 1, 2013, including the reporting relationship of the agencies and entities with the three separate branches of the government. Seven independent agencies are displayed as well. Public service telephone numbers are listed. As indicated, several agencies provide telecommunications for the hearing impaired. Information concerning agencies not listed may be obtained from the state operator at 1-800-422-2319.

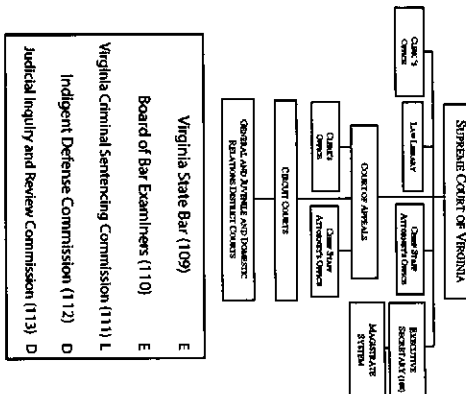
## EXECUTIVE BRANCH

Office of the Governor
Office of the Lieutenant Governor
Office of the Attorney General

## LEGISLATIVE BRANCH

General Assembly
Auditor of Public Accounts (103) D
Division of Capital Police (104) D
Joint Legislative Audit & Review Commission (105) J
Division of Legislative Automated Systems (106) D
Division of Legislative Services (107) D

## JUDICIAL BRANCH



## INDEPENDENT AGENCIES

Virginia College Savings Plan (97)	J
State Lottery Department (98)	H
Virginia Retirement System (99)	G
State Corporation Commission (100)	C
Virginia Commonwealth University Health System Authority (101)	G
Virginia Workers Compensation Commission (102)	C

### Notes

- A Board, Commission, or Council appointed by the Governor and confirmed by the General Assembly
- B Administrative Head appointed by the Governor and confirmed by the General Assembly
- C Court or Commission with administrative power elected by the General Assembly
- D Court, Commission, or Administrative Head appointed by the General Assembly

- E Appointed by the Supreme Court
- F Administrative Head appointed by the Governor, not subject to confirmation by the General Assembly
- G Board, Court, or Commission whose members are appointed in part by the Governor and the General Assembly
- H Board, Commission, or Council and Administrative Head appointed by the Governor and confirmed by the General Assembly

- I Commission whose members are appointed by both the Governor and the General Assembly, subject to confirmation by the General Assembly, and whose Administrative Head is appointed by the Governor and confirmed by the General Assembly
- J Administrative Head appointed by the Board, Council or Commission, which is appointed by the Governor, not subject to confirmation by the General Assembly
- K Administrative Head appointed by the Board, Commission, or Council, which is appointed by both the Governor and the General Assembly, not subject to confirmation by the General Assembly
- L Commission whose members are appointed in part by the Governor, the General Assembly and the Supreme Court

